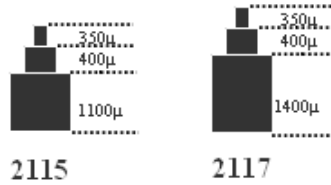


# Cal. 2117

High Hand series of Cal. 2115



## 1. Basic Specification

<b>Calibre</b>	<b>2117</b>
<b>Ligne</b>	<b>10-1/2"</b>
<b>Total height</b>	<b>4.15mm</b>
<b>Hands</b>	<b>3</b>
<b>Date</b>	<b>○</b>
<b>Day of week</b>	<b>Not applicable</b>
<b>Battery life</b>	<b>3 Years</b>

**< Time Standard >**

Type of quartz: Tuning fork type quartz crystal  
 Frequency : 32,768Hz  
 Accuracy : ±20 second / month worn under normal circumstances

**< Battery >**

Type of battery: Silver oxide SR626SW or equivalent

**< Others >**

Driving system: Two-pole stepping motor  
 Jewel : No jewels

**< Additional Mechanisms >**

Quick Date Change by turning crown  
 Second hand stopping at optional position  
 Powercell saving reset mechanism  
 Over-loading compensation device  
 Digital Frequency Control for tone adjustment

**< Balanceable weight of hand >**

Minute hand Max. 0.4 μN.m  
 Second hand Max. 0.09 μN.m

## 2. Separated Parts

<b>Calibre</b>	<b>2117</b>
<b>Setting stem</b>	<b>065-299</b>

## 3. Remarks

**< Setting stem >**

Length of movement center to stem end : 20.0mm  
 Thread : Φ0.9mm x 12.38mm

< Measurement of time >

The unit time of measurement must be set at "10s" or integer fold value of 10s owing to the DFC system. And the measurement must be carried out in state of a complete watch.

< Marking on movement >

UNADJUSTED  
(CAL NO.)  
MIYOTA CO., JAPAN

< Typical clearance >

Mov't - Caseback : minimum 150  $\mu$  m or more

Hands - glass : 300 - 450  $\mu$ m\*

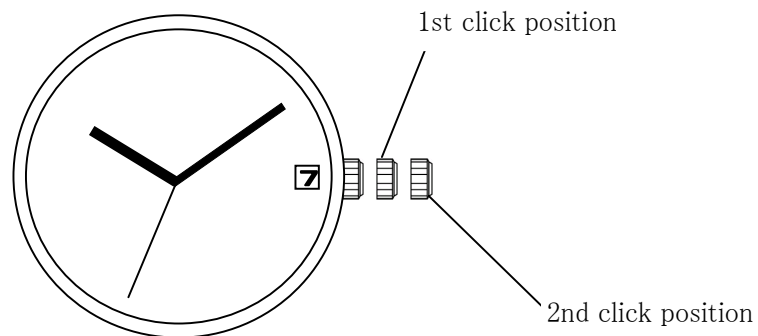
\* Depending and subject to the glass and case structure, and hand length.

< How to set time and date >

Date : Pull out the crown to the 1st click position.

Turn the crown anticlockwise for Date.

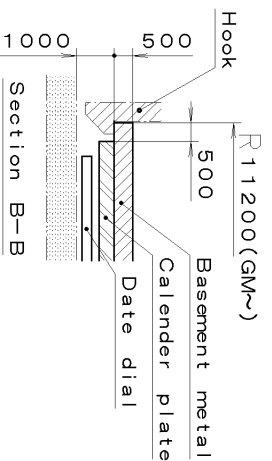
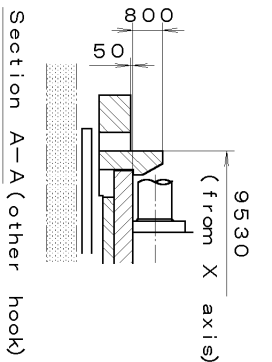
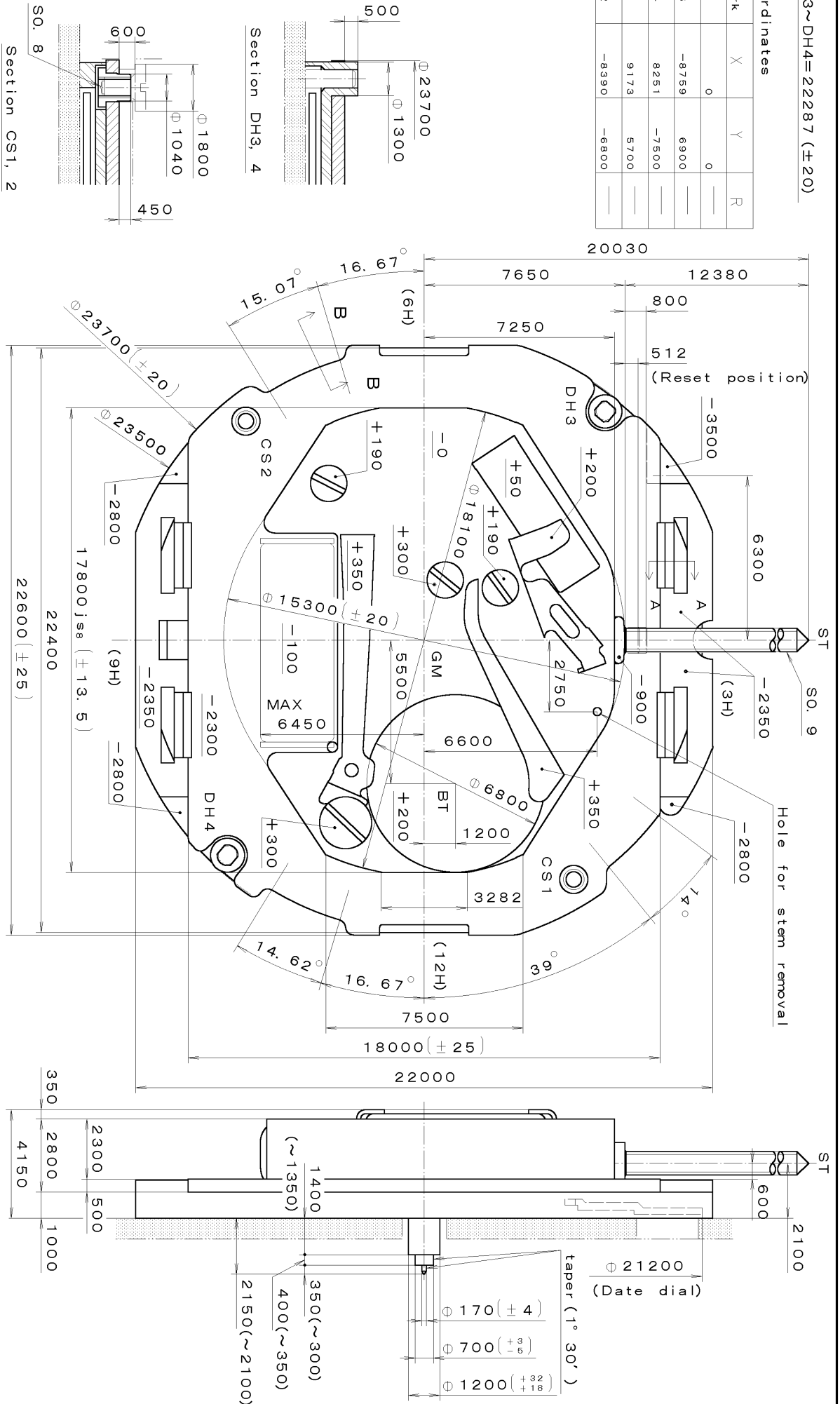
Time : Pull out the crown to the 2nd click position and turn the crown until the time is set correctly.



**These specifications might be changed without prior notice.**

DH3~DH4=22287 (±20)

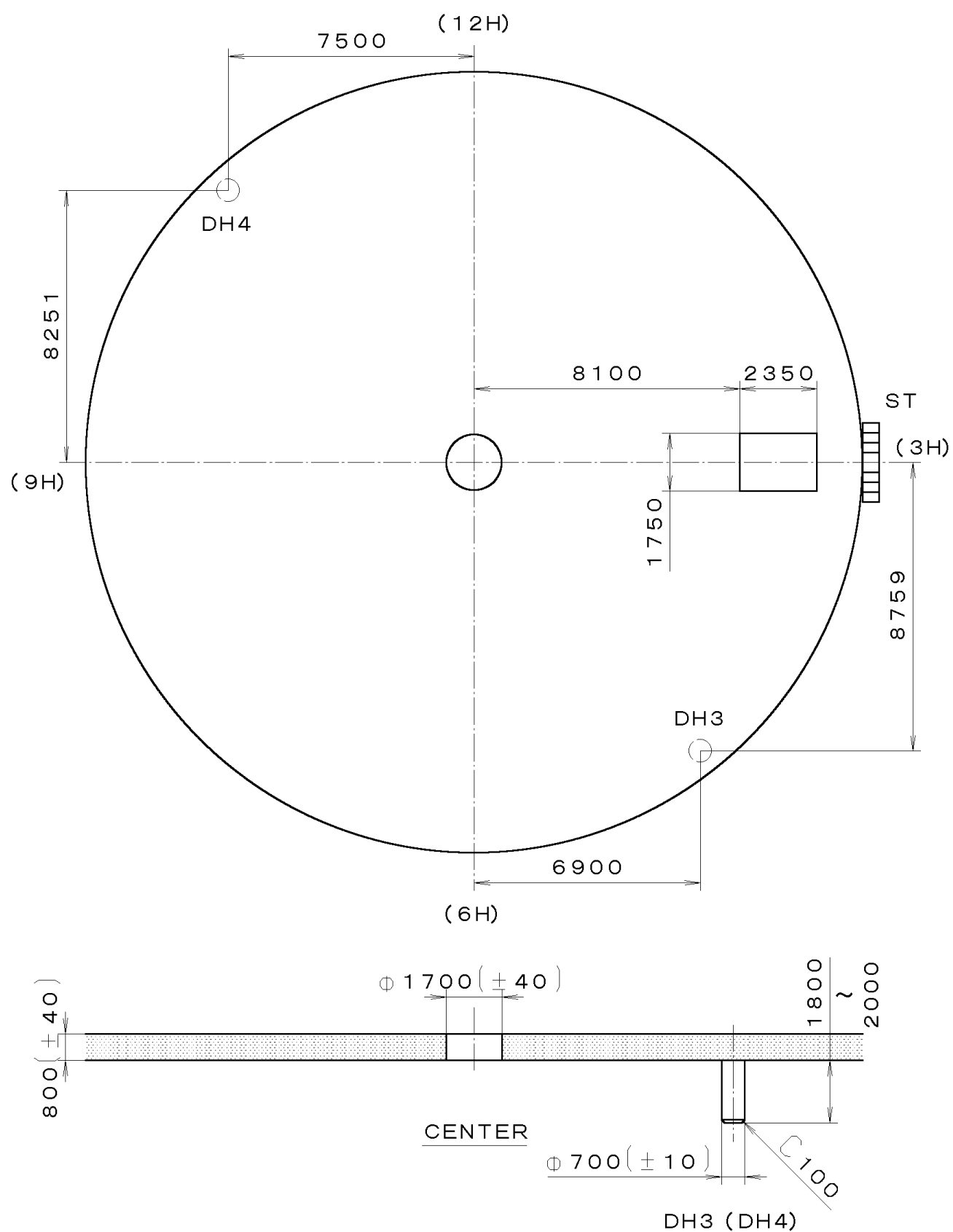
Coordinates			
Mark	X	Y	R
GM	0	0	—
DH3	-8759	6900	—
DH4	8251	-7500	—
CS1	9173	5700	—
CS2	-8390	-6800	—



Material	Quantity	Cal. No. :
Heat Treatment	Unit	2117
Hardness	Scale	Parts:
Plating	Date	
	Drawn	
	Checked	Name:
	Approved	Frame for Case
		Drawing No. : 2117C000
General Tolerances		
Dimensions		
Angles		

This drawing is provisional and subject to our reconfirmation and/or revision without notice.

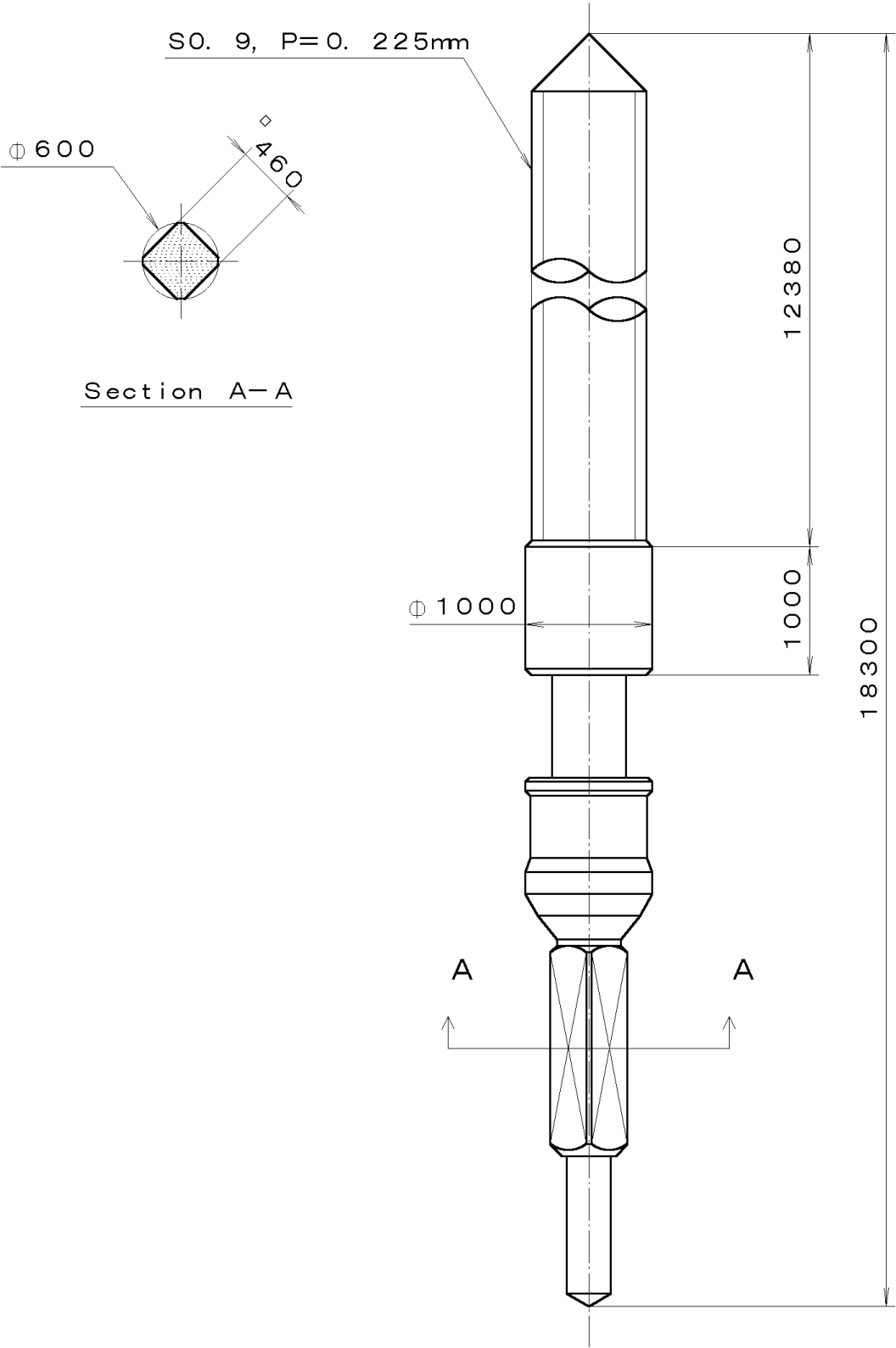
\*\*\* T I P W 2117-00A (01) \*\*\* (2100 1121) 01-03-14



7			Quantity		Cal. No. : <b>2117-00A</b>
6			Unit	1/1000 mm	
5			Scale	6:1	Parts:
4			Date		
3			Drawn		
2			Checked	T. Hiruta	Name:
1			Approved		<b>Indications for Dial</b>
Material					Drawing No. : 2117D000
Heat Treatment			General Tolerances		
Hardness			Dimensions		
Plating			Angles		

This drawing is provisional and subject to our reconfirmation and/or revision without notice.

\*\*\* T I P W (01) \*\*\* (2100 1121) 00-06-23



7			Quantity		Cal. No. :
6			Unit	1/1000 mm	
5			Scale	20:1	Parts:
4			Date		065-299
3			Drawn		Name:
2			Checked	T. Hiruta	SETTING STEM
1			Approved		Drawing No. : 2990S000
Material			General Tolerances		
Heat Treatment			Dimensions		
Hardness			Angles		
Plating					

# MIYOTA

UNIVERSAL MASTERPIECE BORN IN JAPAN

MADE IN JAPAN

METAL MOVEMENT

## INSTRUCTION MANUAL FOR MIYOTA WATCH MOVEMENT

CALIBRE NO. 2117

HIGH HAND SERIES OF 2115

BATTERY : SR626SW

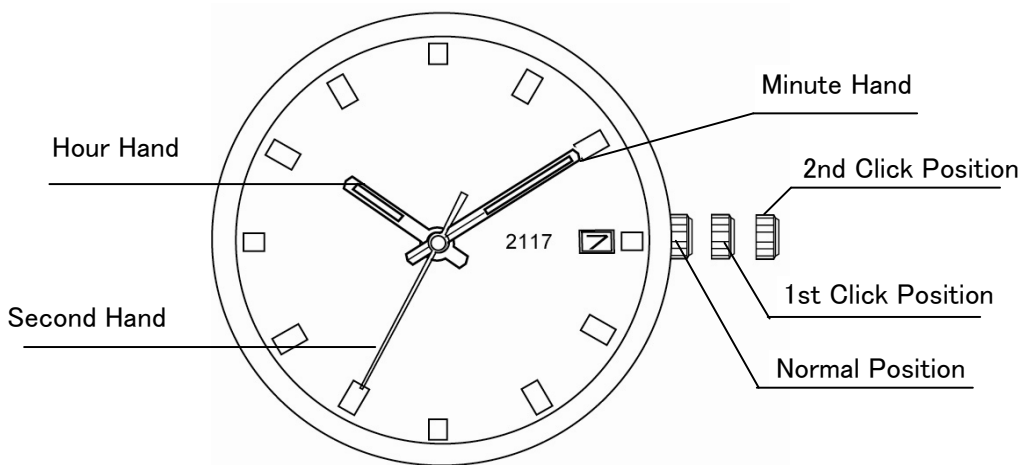
---

A) DISPLAYS AND BUTTONS

B) SETTING THE TIME

C) SETTING THE DATE

A) DISPLAYS AND BUTTONS



**B) SETTING THE TIME**

1. Pull the crown out to the 2nd Click Position.
2. Turn the crown to set hour and minute hands.
3. After the time has been set, push the crown back to the Normal position.

**C) SETTING THE DATE**

1. Pull the crown out to the 1st Click position.
2. Turn the crown counter-clockwise to set the date.  
\* If the date is set between the hours of around 9:00 PM and 1:00 AM, the date may not change the following day.
3. After the date has been set, push the crown back to the normal position.

*These specifications might be changed without prior notice.*

**CITIZEN WATCH CO., LTD.**